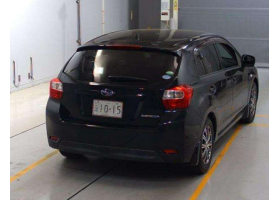


# Subaru Impreza



## VEHICLE INFORMATION

### Cash Price

Includes GST

\$

+ on-road-costs of \$595

Finance this vehicle  
from only

**\$5.09**

per week\*

Total Amount Payable

\$1,501.67

finance  
**NOW**  
*Money your way*

**JANSSEN**  
INSURANCE

Gain peace of mind  
with Mechanical  
Breakdown Insurance.  
Ask us how.

### Body

Hatchback

### Odometer

-

### Engine

-

### Fuel Type

-

### Transmission

-

### Wheels

-

### VIN

-

### Reg No.

-

### Ext Colour

-

### History

-

### Seats

-

### Interior

-

### Audio

-

### Stock ID

7683

### Exterior Features

- » Central Locking
- » Electric Mirrors
- » Electric Windows

### Interior Features

- » Air Bag(s)
- » Air Conditioning

### Mechanical Features

- » Power Steering
- » VTNZ Compliance



Car Point - New Lynn, Phone 09 827 2687, Email [info@carpoint.kiwi](mailto:info@carpoint.kiwi)  
3008 Great North Road, New Lynn, Auckland 0600, New Zealand  
[www.carpoint.kiwi](http://www.carpoint.kiwi)

\* Finance calculation based on a 60 month term, 30% deposit and with an example annual fixed interest rate of 11.95%. Actual interest rate may be higher or lower. Includes an establishment fee of \$495.00 and a monthly maintenance fee of \$1.80. Full term total amount payable of \$1,501.67. Estimate only, not an offer of finance. Terms, conditions and lending criteria apply.