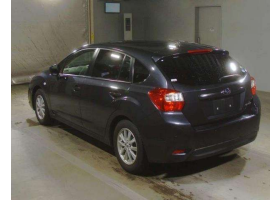


# 2013 Subaru Impreza



## VEHICLE INFORMATION

### Cash Price

Includes GST

# \$15,995

+ on-road-costs of \$595

Finance this vehicle from only

## \$62.50

per week\*

Total Amount Payable

\$21,226.80

finance  
**NOW**  
*Money your way*

**JANSSEN**  
INSURANCE

Gain peace of mind with Mechanical Breakdown Insurance. Ask us how.

### Body

Hatchback

### Odometer

87,979 km

### Engine

1600 cc

### Fuel Type

Petrol

### Transmission

Auto

### Wheels

-

### VIN

7AT0GF09X21016721

### Reg No.

-

### Ext Colour

Grey

### History

-

### Seats

-

### Interior

-

### Audio

-

### Stock ID

6721

### Exterior Features

### Interior Features

### Mechanical Features



Car Point - New Lynn, Phone 09 827 2687, Email [info@carpoint.kiwi](mailto:info@carpoint.kiwi)  
3008 Great North Road, New Lynn, Auckland 0600, New Zealand  
[www.carpoint.kiwi](http://www.carpoint.kiwi)

\* Finance calculation based on a 60 month term, 30% deposit and with an example annual fixed interest rate of 11.95%. Actual interest rate may be higher or lower. Includes an establishment fee of \$495.00 and a monthly maintenance fee of \$1.80. Full term total amount payable of \$21,226.80. Estimate only, not an offer of finance. Terms, conditions and lending criteria apply.